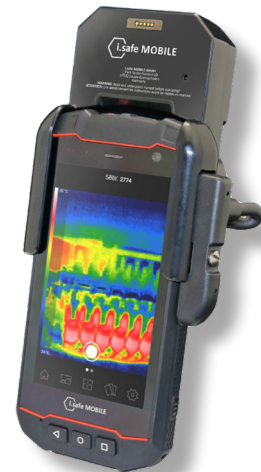


# THERMAL CAMERA IS-TC1A.1

## ZONE 1/21 EX

The thermal camera IS-TC1A.1, in combination with the industrial smartphone IS530.1 detects temperatures in the Ex-hazardous area from -40 °C to 330 °C in a matter of seconds via the Seek Thermal app (free download in Google Play Store). The thermal images and videos are processed and documented directly via the ISM interface of the IS530.1 smartphone.



### Advantages:

- Capture, analyze and document thermal images
- Direct data transfer via multifunctional (ISM) interface
- Direct interface connection with the device, no Bluetooth® necessary
- Power supply via the connected device, therefore no battery necessary

### Technical features:

Sensor resolution	200 (h) x 150 (v) / 30000 pixels / FixFocus / Digital zoom over app
Sensor sensitivity	65 mK (typical)
Frame rate	<9 Hz to 32 Hz
Scene dynamic range	-40 °C to 330 °C
Temperature accuracy	± 7 °C and 7 % (at 5 °C to 140 °C)   ± 10 °C and 10 % (at 140 °C to 330 °C)
Detection range	up to 300 m
Recognition range	up to 75 m
Identification range	up to 25 m
View range	35° (HFOV)   26° (VFOV)
Dimensions	size: 112 x 82 x 50 mm   weight: 190 g
Power supply	over the connected mobile device
Communication	over the multi functional ISM interface of the IS530.1
Types of protection	IP68   MIL-STD 810H   useable from -20 °C to + 55 °C

### ATEX:

II 2G Ex ib IIC T4 Gb

II 2D Ex ib IIIC T135°C Db